

EDEN MIDCALF
— SALES & LETTINGS —

50% SHARED OWNERSHIP

£90,000

Mill Brook Meadow

Kinver, DY7 6FD

PROPERTY SUMMARY

*** £90,000 FOR 50% SHARE *** A two bedroom shared ownership first floor apartment constructed in 2022. Pleasantly located in a sought after cul-de-sac location and just a short distance from amenities in historic Kinver village. The property offers a well proportioned and attractively appointed layout that is "ready to move into", together with off-road parking for two cars. EPC=B

2

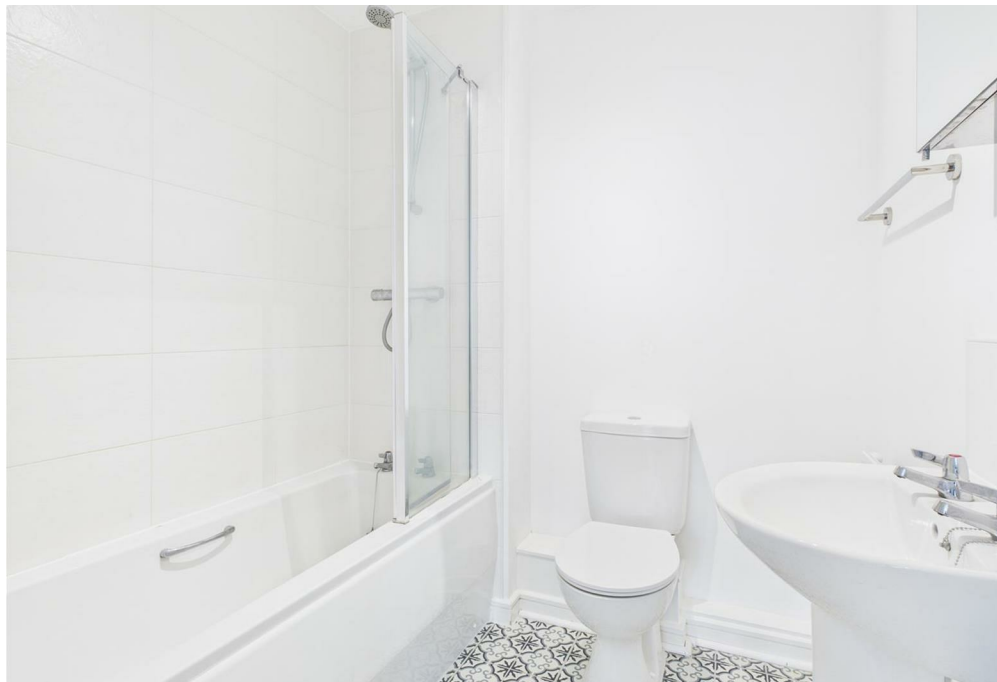


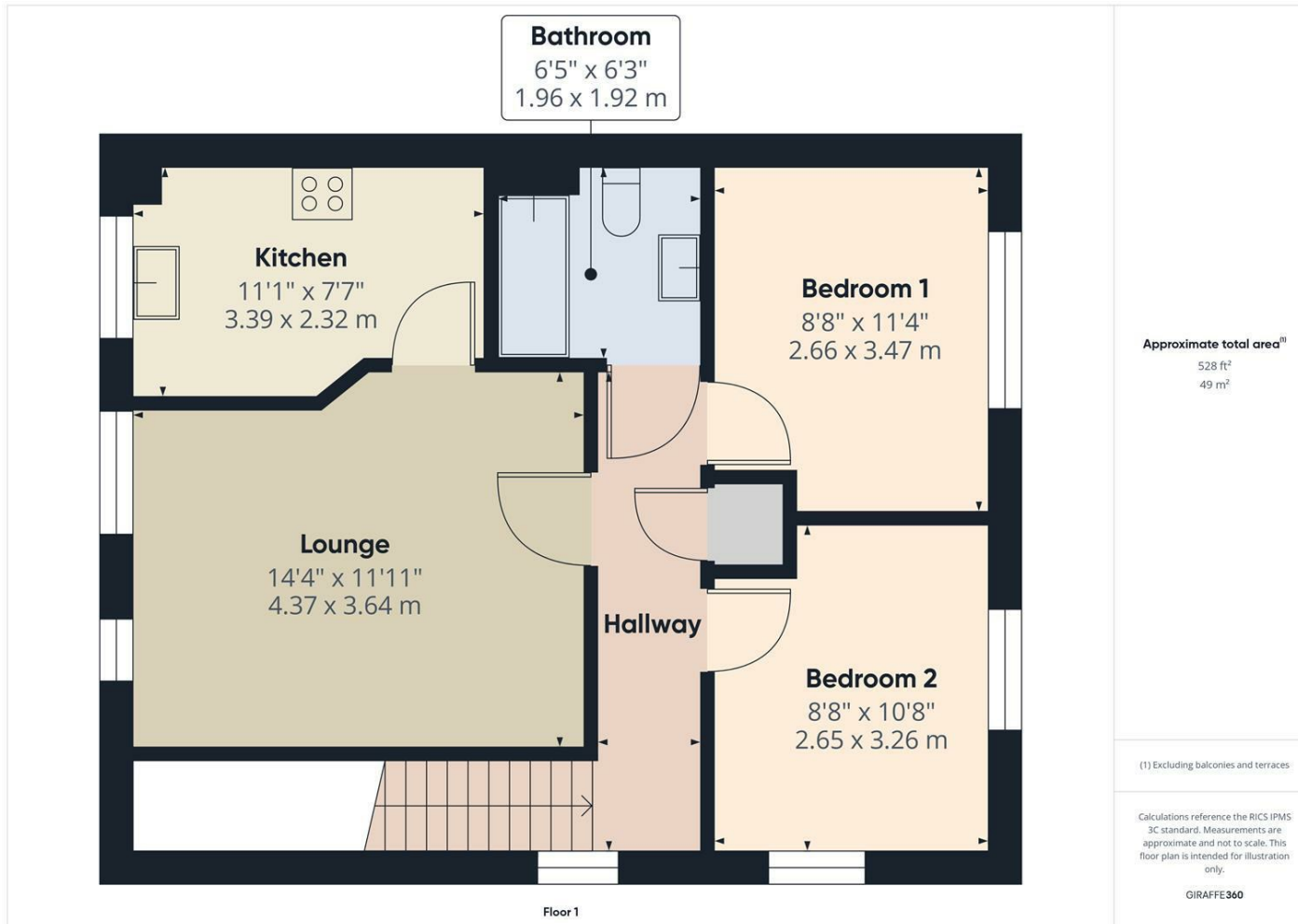
1



1







Approximate total area⁽¹⁾
528 ft²
49 m²

(1) Excluding balconies and terraces

Calculations reference the RICS IPMS 3C standard. Measurements are approximate and not to scale. This floor plan is intended for illustration only.

GIRAFFE360

LOCAL AUTHORITY

TENURE

Leasehold

COUNCIL TAX BAND

A

VIEWINGS

By prior appointment only

Energy Efficiency Rating		
	Current	Potential
<i>Very energy efficient - lower running costs</i>		
(92 plus) A		
(81-91) B	83	83
(69-80) C		
(55-68) D		
(39-54) E		
(21-38) F		
(1-20) G		
<i>Not energy efficient - higher running costs</i>		
England & Wales	EU Directive 2002/91/EC	

Agents Note: Whilst every care has been taken to prepare these particulars, they are for guidance purposes only. All measurements are approximate and are for general guidance purposes only and whilst every care has been taken to ensure their accuracy, they should not be relied upon and potential buyers/tenants are advised to recheck the measurements.

EDEN MIDCALF
SALES & LETTINGS

28 High Street
Kinver
DY7 6HF

01384 878000

<https://www.edenmidcalf.co.uk/>
us/